

()

海外区域

+7 (926)-894-81-96 ru@ifelift.com
SK Plaza, 163 2, .

+971(0)42505888 ae@ifelift.com
502# Sapphire Tower, Ittihad Road, Deira, Dubai , UAE

+61(0)8 9202 4666 au@ifelift.com
36 Beringarra Avenue Malaga WA 6090

海外区域

+62 21 22604802 ifeindo@ifelift.com
The Mansion Dukuh Golf Kemayoran Tower Fontana Lt. 21 Unit L2&m2,
Jl Trembesi Blok D4 Pademangan Timur Pademangan Jakarta Utara Dki Jakarta 14410

+94112686867 Sl@ifelift.com
158/9 Lake Drive colombo 08 Sri lanka

+86 13929229955
23 Genting Road #07-01/02 Chevalier House Singapore 349481

北部区

+86-010-65735589
8 4 1 417

+86-0311-85868077 A1 1901

+86-0312-3137623 1888 C 2101

+86-0351-8717188 5 605

+86-022-83699214 2 1610

+86-0472-2103443 7 2 2105

+86-0411-39603199 313 B 1117

+86-024-82573350 19-2 604 605 606

+86-0431-82864756 A 1417

+86-0451-86201415 26

华南区

+86-0731-84418443 2501

+86-027-85886443 23 2-1-1901

+86-0791-86585443 87 A4 601

+86-020-85552971 555 14 503

+86-0760-88805443 1 5

+86-0762-3186443 902

+86-0753-2528663 3 7

+86-0668-2148443 11 302

+86-0592-5363443 28 A 1111A

+86-0591-28313043 53 9 10 202

+86-0898-65951443 1004

华东区

+86-0371-55073272 CBD 23 2 1202

+86-0395-6166774 3-1-703

+86-0551-64688443 1322-1323

+86-025-85504744 65 15 303

+86-0531-85902805 F 2-2-601

西南区

+86-028-86983080 1700 S1-9 935

+86-023-62826337 19 14 1401

+86-0851-86754256 E1 2603

+86-0871-65658850 5 1405

+86-0771-5823185 78 1 3001

深莞惠区

+86-0769-22413443 E 2 203

+86-0755-23777244 A 605

+86-0752-2119443 11 B 2 2205

西北区

+86-029-86240696 C 1703

+86-0931-2664041 1409

+86-0991-5850699 322 A 9D

+86-0951-5102334 A 813



+86-769-82078888 +86-769-87732448
400-6789-443 www.ifelift.com

201902 Qs lè _ë



VAMB

002774

IFE 快意电梯



TRANSPORT HEALTH RELIABLE QUALITY

IFE

IFE

VAMB series of medical elevator is famous for its safety performance and high reliability Humanized handrail and control interface are all specialized designed for medical care personnel and wheelchair-bound patients VAMB series of medical elevator could be specialized designed according to customer's demand Smooth running precise leveling, excellent ventilation system, soft and harmonious decoration IFE series of medical elevator win a high degree of appreciation by all of its passengers.



hospital



retirement homes



nursing homes

DOMESTIC REPRESENTATIVE CASES

IFE

IFE

IFE

IFE

IFE

Every project is significant footprint of IFE history, there are over ten thousand project have witnessed the great contribution of the IFE's products. IFE will keep going to contribute our effort to provide the best transportation equipment to the world.



Zhujiang Hospital of Southern Medical University



Shenzhen Armed Police Hospital



Yuanda Hospital of Foshan



Fuqing Maternal and Child Hospital



Zalantun Hospital



The third Hospital of Fuzhou



Banan people's Hospital of Chongqing



The Third People's Hospital of Dongguan



Haifeng Hospital



Dongguan Qishi Hospital



Jiangxi Armed Police Army Hospital



Guiyang First Popular Hospital



Jiuquan Renmin Hospital



Zhongshan Boai Hospital



Baotou Central Hospital

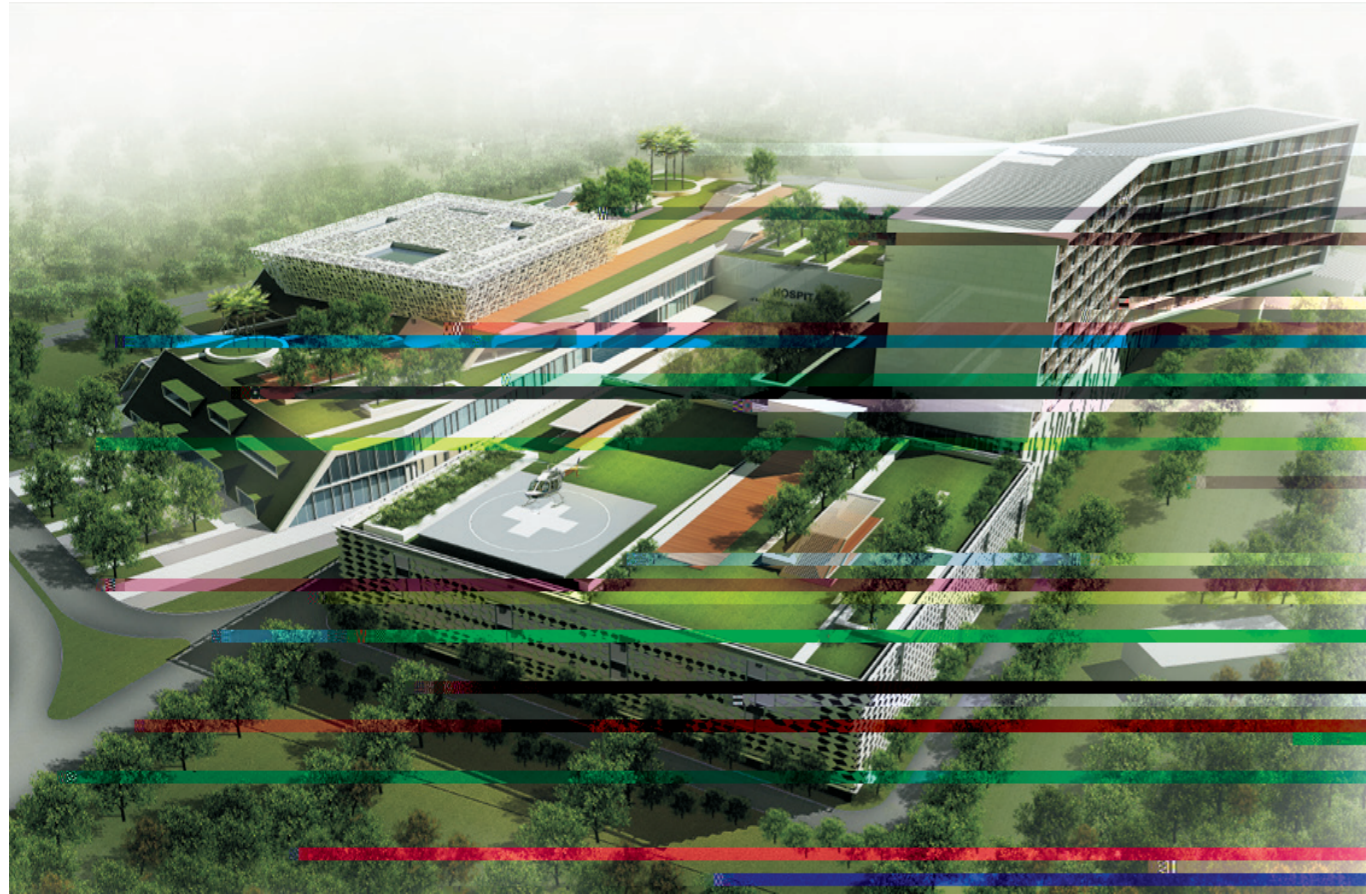


The Second People's hospital of Yeyan



The First Hospital of Lanzhou University

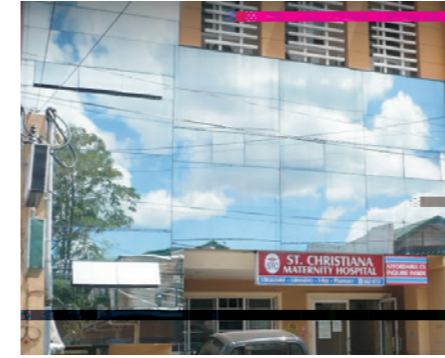
FOREIGN REPRESENTATIVE CASES



704
704 Bed Teaching Hospital for KDU



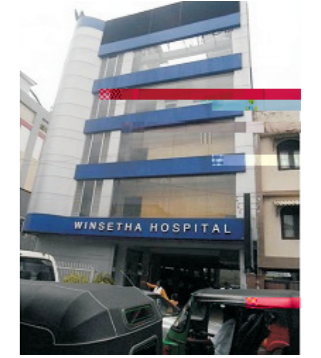
Diliman Doctors Hospital, Philippines



ST CHRISTIANA MATERNITY HOSPITAL



KPJ Ampang Puteri Specialist Hospital



Sri Lanka WINSETHA HOSPITAL



Australian Cancer Survivorship Centre



IBIN
IBIN Medical Center, UAE



Gat Andres Bonifacio Hospital



Hospital Jeli L1-L3



Commonwealth Hospital & Medical Center



Calamba Doctors Hospital

SAFETY GUARANTEE , TECHNOLOGY SUPPORTING

UCMP

ZL201320606488.3

UCMP for Preventing Unintended Car Movement

Patent No. 201320606488.3

Unintended Car Movement Protection system(UCMP) prevents car unintended movement in the door opening area, prevents the risk of accidental movement of the car, and protects the safety of the passengers.

ZL201420470694.0

Anti-loosen Detection of Steel Rope for Protecting Riding Safety

Patent No. 201420470694.0

Whole-process real-time detected by anti-loosen detection of steel rope device. The elevator stops running immediately ensuring passengers safety if steel rope loose.

ZL201410337015.7

Alarmed for Overloading Alert by Precisely Weighing Technology

Patent No. 201410337015.7

Accurately measure car load at each landing floor by using the industry-leading weighing technology to avoid potential safety hazard and accidental injuries caused by overloading.

ZL201621450975.5

New Electrical Design Door Lock for Preventing Risk of Door Lock Short-circuited

Patent No. 201621450975.5

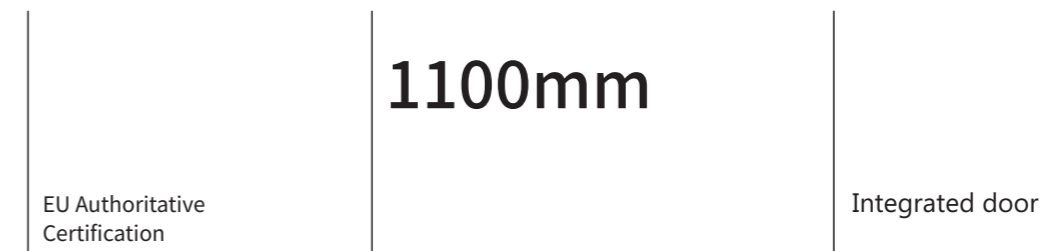
Prevent electrical circuit of elevator door lock and switch contact of door lock being man-made short circuit cause elevator to operate in the door opening condition, thus avoiding the risk of accident.

EMC

EMC

Authoritative CE certification, EMC Standard

Product is CE-approved and complies with EMC and environmental standards, giving passengers safety protection by low radiation without electromagnetic pollution.



45kg 1100mm(800mm)

Higher Standard than National Standard of Landing Door Strength Test

Through the strength test by using 45kg pendulum from 1100mm (national standard requirement is 800mm) height free fall strike the landing door, effectively deal with reckless strike, to prevent passengers from falling into the shaft.

Integrated Door Vane Reduces Failure of Door Opening

Prevent electrical circuit of elevator door lock and switch contact of door lock being man-made shortThe new integrated door vane is a collection of aesthetic design, easy installation, commissioning, safe and reliable operation to reduce the door opening failure.



IFE's noise reduction device brings a quiet environment

The switch collision sound of the end station can be eliminated by non-contact magnetic induction technology to achieve fast speed change without noise and vibration. Finally, let passengers enjoy a quiet journey.

1200*2300*2350mm

METICULOUS SERVICE , COMFORTABLE CARE

IFE全系列吊顶采用双送风换气装置，两侧出风的布局方式，加强轿厢空气流通，加速轿厢内外空气循环频率，营造更加清爽，舒适，洁净的乘梯空间。

Suspending double fans, enjoyable the space with clean and cool air

IFE series exclusive suspending double fans have the layout of the wind , enhancing the air circulation of the car and accelerating the frequency of air circulation inside and outside the car. More comfortable cooler and cleaner space for car can be created.

()

negative-ion generator (optional)

The car can be equipped with negative ion generator module, which can effectively remove dust and odor, eliminate all kinds of bacteria and viruses, purify the car air, and completely eliminate the circulation and transmission of harmful substances in the air.

/

IFE

meticulous service, comfortable care

The shimmering light of operation panel in the standby mode is convenient for the passengers to find the landing button of destination. When the button is pressed, it will make a buzzer sound and the button will resume the normal state at the same time. IFE is committed to consider the use feeling of all kinds of passengers.

1000 。

One button set to keep the door open longer, no need for manual operation

If the time keeping the door open needs to be prolonged, press the button set in the control box. The elevator will do what you request, and the maximum can be set to 1000seconds.

CAR DECORATION STANDARD



BCAR02-00

C66-00	/PC	Ceiling	C54-00 Hairline stainless steel /PC Transparent Light
COP34-00		Control Box	COP34-00 Hairline stainless steel
LED02-00		Display	LED02-00 White dot matrix
CW03-00		Car front wall	CW03-00 Hairline stainless steel
L11-00		Car Door	L11-00 Hairline stainless steel
H01-00	()	Handrails	H01-00 Flat head elbow hairline stainless steel (One side)
F01-01	PVC	Floor	F01-01 PVC

CAR DECORATION OPTIONAL



BCAR01-00

C54-00	/	Ceiling	C54-00 Hairline stainless steel / Acrylic Transparent Tubent Light
COP34-00		Control Box	COP34-00 Hairline stainless steel
LED02-00		Display	LED02-00 White dot matrix
CW03-00		Car front wall	CW03-00 Hairline stainless steel
L11-00		Car Door	L11-00 Hairline stainless steel
H01-00	()	Handrails	H01-00 Flat head elbow hairline stainless steel (One side)
F01-01	PVC	Floor	F01-01 PVC

DECORATION CONFIGURATON



COP34-00()
:
:

COP34-00(Standard)
Panel: Hairline Stainless Steel
Display: White dot matrix



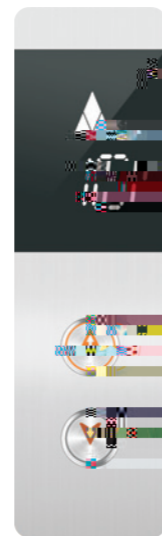
COP46-00()
:
:8.4 ()

COP46-00(Optional)
Panel: Hairline Stainless Steel
Display: 8.4 inches LCD Display(vertical display)



HOP37-00()
:
:

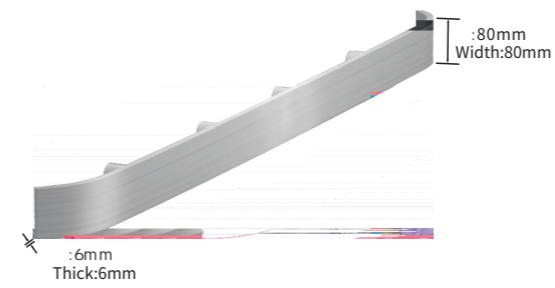
HOP37-00(Standard)
Panel: Hairline Stainless Steel /
Dark Grey PMMA
Display: White dot matrix



HOP38-00()
:
:

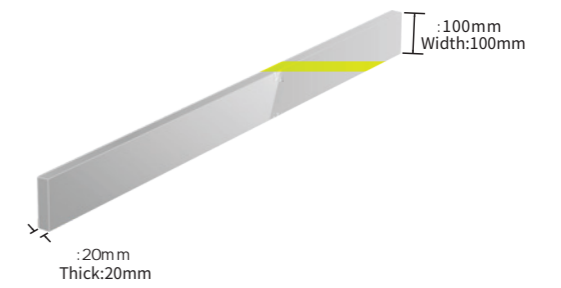
HOP38-00(Optional)
Panel: Hairline Stainless Steel /
Dark Grey PMMA
Display: Segment LCD in White

OPTION HANDRAIL



H01-00()

Single row flat elbow hairline stainless steel handrail

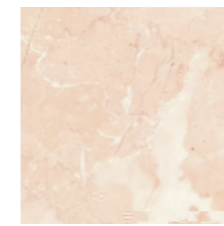


H09-01()

Single row square shape mirror stainless steel handrails

(PVC)

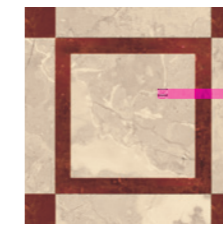
FLOORS



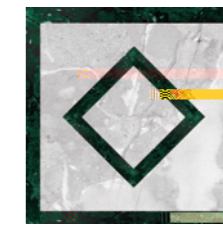
F01-01
F01-01 Standard



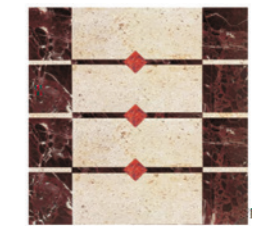
F01-04
F01-04 Optional



F01-05
F01-05 Optional



F01-06
F01-06 Optional



F01-07
F01-07 Optional

STANDARD FINISHED LANDING DOORS



Door jamb LDJ01-00 ()
LDJ01-00 Hairline Stainless Steel(First floor)
L11-00 ()
Landing doors L11-00 Hairline Stainless Steel(First floor)



Door jamb LDJ01-01
LDJ01-01 Painted Steel Matt Grey(Other floors)
L11-01 ()
Landing doors L11-01 Painted Steel Matt Grey(Other floors)



01	FSC	Full selective collection
02	FLP	Full-load by pass
03	CCR	Car call reset
04	DOB/DCB	Door open button/Door close button
05	DOBL/DCBL	Door open button light/Door close button light
06	RO	Resume operation in power resupply
07	HL	Home landing
08	ANCCP	Anti-Nuisance car call protection
09	RE-OP	Door reopening by landing call
10	TC	Torque compensation in start
11	DPT	Direct Parking Technology Saf



	SLP	Safety loop protection
	AMEPD	Absent or mistaken epsilon phase device Y
	OP	
	SLC	
	DR	
	DI	Door Interlock
	LZG	Landing zone Guard

i haq > s So o

v



Special operating

37	AO	Attendant operation
38	BS	Bypass switch
39	IS	Independent service
40	MFS	Main floor setting
41	FFS	Firefighting floor setting
42	IO	Inspection operation
43	FCPS	Flexible car park set

Standard functions

Man-machine interface

44	CLCD LCD	In-car LCD Display
45	GFLCD LCD	Ground floor LCD Display
46	FMFS	Floor market flexible set
47	AG	Arrival gong
48	HBMLF	HOP button micro-lighting function
49	CBMLF	COP button micro-lighting function
50	DOTEF	Door open time extension function

Emergency Function

51	AB	Alarm button
52	ECL	Emergency car lighting
53	FSI	Five station intercom 4x0.75mm ² (1800)
54	EFO	Emergency fire operation
55	FO	Fireman's operation
56	ER	Emergency rescue

Energy-saving function

57	PS	Parking service
58	ATOO	Automatic turn off/on

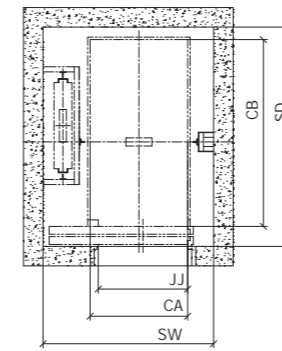
Optional functions

01	DCO	Duplex Control Operation
02	GCO	Group Control Operation 3 8
03	IADO	In Advance Door Opening
04	REL	Re-leveling
05	ARD	Automatic rescue device
06	EAC	Elevator Air Conditioner
07	PRD	Power regeneration device
08	CMS	Community Monitoring System
09	COPIC IC	COP IC Card Management
10	HOPIC IC	HOP IC Card Management
11	VIP VIP	VIP Bypass VIP
12	SCOP	Sub-COP
13	DPCOP	Disabled Person COP
14	VBS	Voice Broadcast System ARD
15	BB	Braille Button
16	ACS	Accessibility
17	MOIH	Multi-office Intercom Host
18	NIG	Negative Ion Generator
19	CCTVC	CCTV Cable
20	ED	Emergency Doors 11m
21	TD	Trap Doors
22	CSG	Counterweight Safety Gear
23	ILCP	Imorted Light Curtain Protection

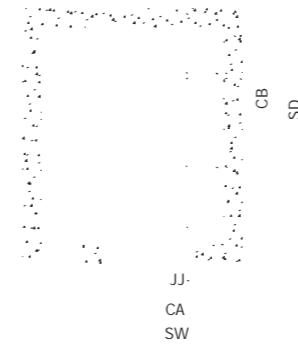
VAMB-ME

VAMB-ME HOISTWAY LAYOUT PROFILE

NO.	Specification	1275 17 /P		1600 21 /P	
01	kg Rated capacity(kg)	1275		1600	
02	m/s Speed(m/s)	1.0	1.75	1.0	1.75
03	Control system	Full collective operation			
04	Driving system	VVVF VVVF Driving			
05	Door control	VVVF VVVF Door control			
06	Traction machine	Gearless			
07	Communication method	Serial Communication			
08	* * (mm) Car size(width*depth*height)	1200*2300*2350		1400*2400*2350	
09	* (mm) Door opening size(width*height)	1100*2100(1100*2100)	1300*2100(1300*2100)
10	(m) Travel height(TR)	75			
11	* (mm) Hoistway size min(width*height)	2100*2700 2400*2700	2100*2850 2400*2850	2400*2800 2350*2900	2400*2950 2350*2950
12	Motor position	Inside the machine room			
13	(mm) Overhead(OH)	4350	4550	4350	4550
14	(mm) Pit depth(PD)	1800	1950	1800	1950
15	kW Motor rated capacity(kW)	8.6	15.1	10.5	18.3
16	A Rated current(A)	16.7	29.3	19	33
17	(A) Starting Current(A)	25	44	28.6	49.4
18	(V) Lock voltage(V)	DC110		DC68	
19	Main power supply and minimum wiring requirement of elevator	380V 50Hz		4 3x10mm ² +2x6mm ²	



NO.	Specification	1275 17 /P		1600 21 /P	
01	kg Rated capacity(kg)	1275		1600	
02	m/s Speed(m/s)	1.0	1.75	1.0	1.75
03	Control system	Full collective operation			
04	Driving system	VVVF		VVVF Driving	
05	Door control	VVVF		VVVFDoor control	
06	Traction machine	Gearless			
07	Communication method	Serial Communication			
08	* * (mm) Car size(width*depth*height)	1200*2300*2350		1400*2400*2350	
09	* (mm) Door opening size(width*height)	1100*2100(1100*2100)	1300*2100(1300*2100)
10	(m) Travel height(TR)	75			
11	min * (mm) Hoistway size min(width*height)	2350*2800 2550*2700	2350*2850 2550*2850	2550*2900 2550*2900	2550*2950 2550*2950
12	Motor position	In the top of the shaft			
13	(mm) Overhead(OH)	4300	4500	4300	4500
14	(mm) Pit depth(PD)	1700	1800	1700	1800
15	kW Motor rated capacity(kW)	9.0	15.7	10.6	18.6
16	A Rated current(A)	21	36	25	43
17	(A) Starting Current(A)	31.5	54	37.5	64.5
18	(V) Lock voltage(V)	DC110		DC68	
19	Main power supply and minimum wiring requirement of elevator	380V 50Hz		4 3x10mm ² +2x6mm ²	



Shaft Section Plan